



PC-3000

Professional Data Recovery Solutions

Product Catalogue





About Us

More than 25 years

Over 115 countries

16 000+ customers

ACE Lab is internationally recognized as a pacesetter in the development of the solutions for recovering data and evidence from the widest range of storage devices. For 26 years we have been setting the benchmark and remaining the proven leader in the field by constantly perfecting our products and services.

Through the PC-3000 product line we provide customers with the most comprehensive and reliable professional data recovery tools on the market. Upward of 16 000 professionals from over 115 countries award their trust to ACE Lab and get profit from the PC-3000 solutions.

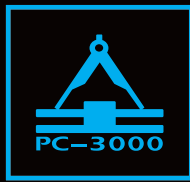
Our company has been certified with ISO 9001:2015 and ISO/IEC 27001:2013. Thus, our customers can be sure that ACE Lab fully conforms to the quality management and the strictest information security requirements.

[PC-3000 is the ultimate standard in data recovery!](#)

We specialize in

- ▶ Professional data recovery research and development
- ▶ Products manufacturing
- ▶ Application of data recovery techniques in digital forensics
- ▶ Full-scale technical support service
- ▶ Training in all areas of data recovery

Every Serious Data Recovery Engineer Uses the PC-3000 Tools!



Who are the experts in data recovery? Highly motivated individuals and enterprises, able to help any customer with the widest range of cases and handle even the most complex issues. They have the wits, knowledge, skills and right tools at the ready.

The PC-3000 Professional Systems represent the high-end solutions for HDD & SSD repair, as well as data recovery from the variety of storage devices such as SATA/IDE HDDs, SAS/SCSI drives, RAID arrays, SSDs, Flash drives, etc.



ACE Lab, being the leader of the industry, is always the first to apply all of the latest innovations. The PC-3000 Tools deliver breakthrough technologies, up-to-date methods and techniques for data recovery and drives repair. Our products offer the highest success rates, incomparable quality and unparalleled support. For the convenience of our users the software is available in four languages: English, Japanese, Chinese and Korean.

We've spent years gathering the feedback and anticipating the priorities of our customers. You may be certain that with PC-3000 you'll get the 360 degrees approach to your needs. Constant development of the hardware, regular software updates, comprehensive technical support and exceptional training opportunities – all of this is to **ensure your business is efficient and highly profitable.**

Solutions for all areas of Data Recovery and Drive Repair Industries

	Repairing	Recovering data
SATA/IDE HDD	PC-3000 Express	PC-3000 Express + Data Extractor Express
	PC-3000 UDMA	PC-3000 UDMA + Data Extractor UDMA
SAS/SCSI HDD	PC-3000 SAS	PC-3000 SAS + Data Extractor SAS
RAID	PC-3000 Express	PC-3000 Express + Data Extractor Express RAID Edition
	PC-3000 UDMA	PC-3000 UDMA + Data Extractor UDMA RAID Edition
	PC-3000 SAS	PC-3000 SAS + Data Extractor SAS RAID Edition
SSD	PC-3000 SSD + PC-3000 Express	PC-3000 SSD + PC-3000 Express + Data Extractor Express (or Data Extractor Express RAID Edition)
	PC-3000 SSD + PC-3000 UDMA	PC-3000 SSD + PC-3000 UDMA + Data Extractor UDMA (or Data Extractor UDMA RAID Edition)
Flash drives*		PC-3000 Flash

* – USB Flash drives, SD, microSD, Memory Stick (MS), xD, MMC, CF, Voice Recorder, etc.



New! PC-3000 Express



The fastest, most efficient and powerful product that ever existed

The flagship data recovery solution when customers' time and the speed of data recovery are top priorities



6-port tester-board

4 SATA ports with speed up to 150 MB/s

+

2 PATA ports with speed up to 133 MB/s

SATA0 and SATA1 are the primary ports, SATA2 and SATA3 ports are switchable with the PATA ports (PATA0 and PATA1).

The enhanced power control functionality ensures better feedback and diagnostics while powering up damaged HDDs. New SATA power connectors allow to connect PC-3000 Express to any PC equipped with SATA power adapter.

4 HDDs

can be connected to the PC-3000 Express at the same time. Thus, you can restore either 4 SATA drives or 2 SATA and 2 PATA drives or 3 SATA and 1 PATA drives.

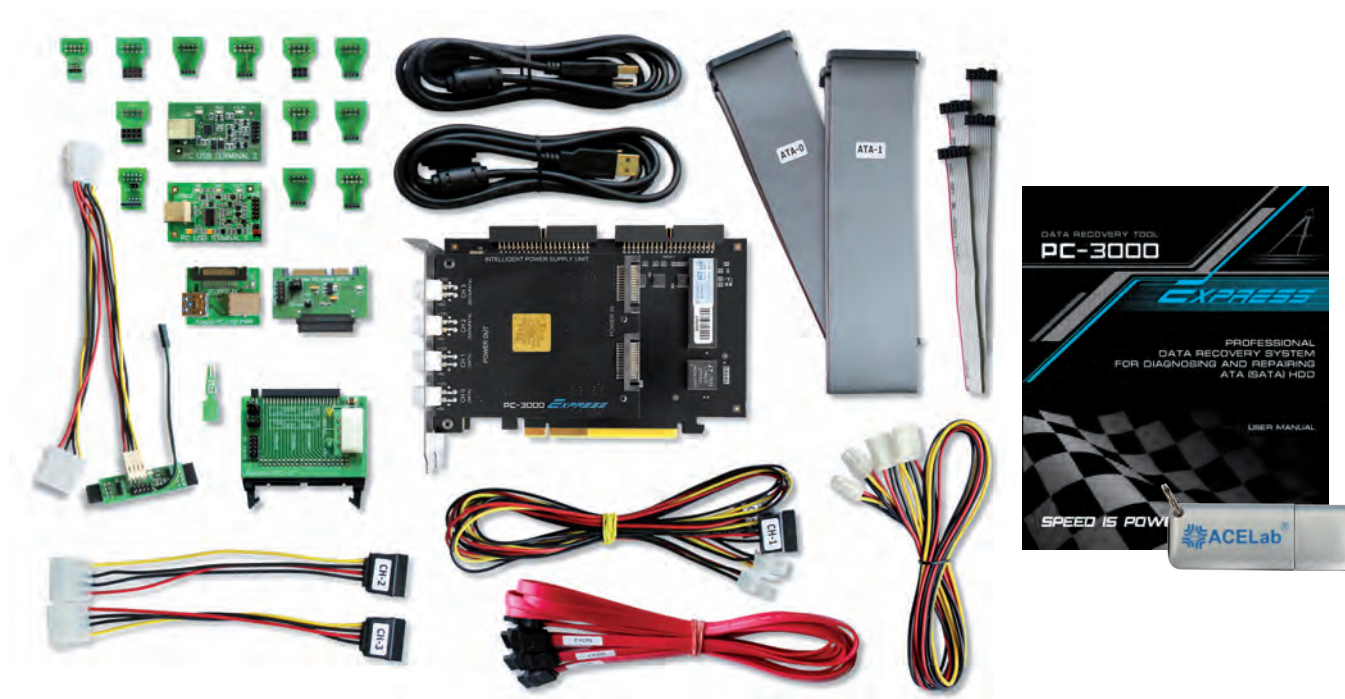
The PC-3000 Express is a hardware-software solution intended for diagnosing and repairing damaged SATA/IDE HDDs. For data recovery you need both the PC-3000 Express and the Data Extractor Express, or the PC-3000 Express and the Data Extractor Express RAID Edition if you wish to recover data from RAID.



What's new in the PC-3000 Express Rev.2.0

- ▶ More efficient HDD diagnostic due to the oscilloscope functions of the new Intelligent Power Supply Unit
- ▶ Better compatibility with modern PC power supply units as a result of substitution of the old 4-pin PATA Power Connectors with SATA Power connectors
- ▶ The increase of the data transfer rate and improvement of the SATA ports stability thanks to the new circuit design of the Serial ATA 3.0 GB/s bridges

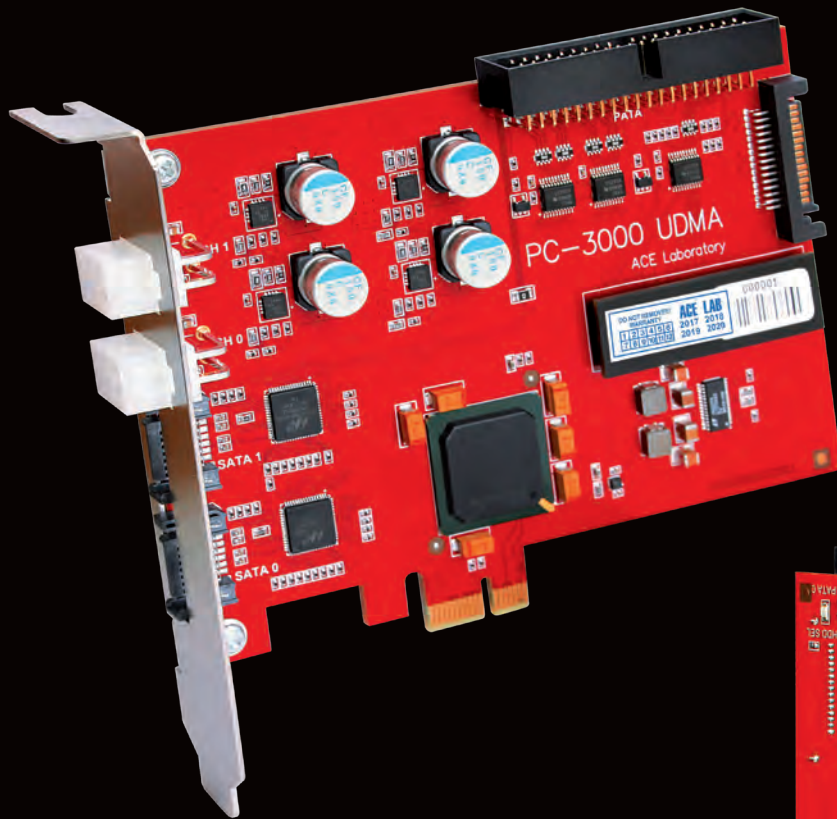
The PC-3000 Express Kit:



1. PC-3000 Express controller	– 1 pc.	14. PC-WD 2.5" adapter	– 1 pc.
2. PC-USB PWR adapter	– 1 pc.	15. ATCS, ATDA probe unlock	– 1 pc.
3. PC-USB-TERMINAL adapter	– 2 pcs.	16. USB 2.0 Defender cable	– 2 pcs.
4. PC-2" adapter	– 1 pc.	17. SATA RAID edition (100 cm) cable	– 4 pcs.
5. SATA-micro SATA adapter	– 1 pc.	18. UDMA80 (80 cm) flat cable	– 2 pcs.
6. MX-SAFE adapter	– 1 pc.	19. IDC10 (30 cm) cable	– 2 pcs.
7. PC-FUJ.SATA adapter	– 1 pc.	20. MX-SAFE power cable	– 1 pc.
8. PC-QUANTUM adapter	– 1 pc.	21. SATA HDD (100 cm) power cable	– 2 pcs.
9. PC-SAMSUNG adapter	– 2 pcs.	22. PATA HDD (85 cm) power cable	– 2 pcs.
10. PC-SEAG.SATA adapter	– 2 pcs.	23. PATA-SATA (15 cm) power adapter	– 2 pcs.
11. PC-SEAGATE adapter	– 2 pcs.	24. PC-3000 Express software, resource database	– 1 Flash drive
12. PC-TOSH.SATA adapter	– 2 pcs.	25. User manual	– 1 book
13. PC-WD 3.5" adapter	– 1 pc.		

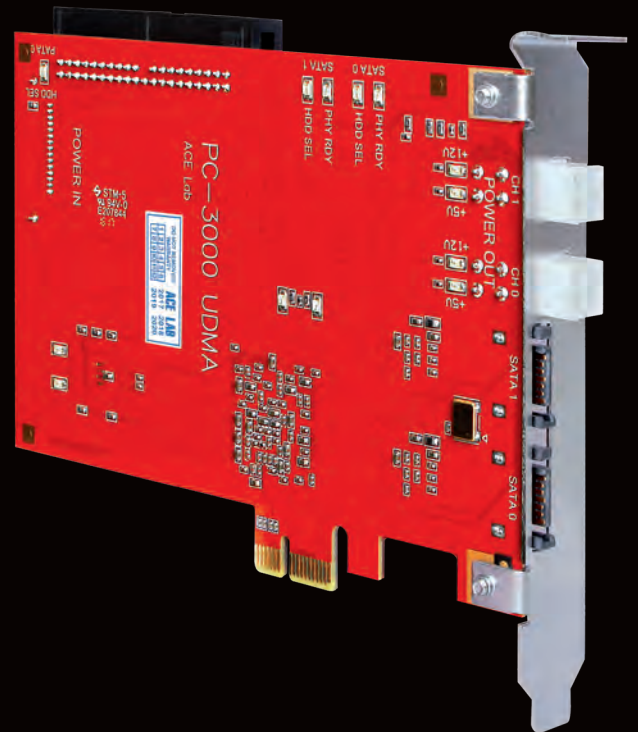


PC-3000 UDMA



The optimal combination of high efficiency and reasonable price

The main «workhorse» for daily use at any data recovery lab



3-port tester-board

2 SATA ports with speed up to 150 MB/s

+

1 PATA port with speed up to 133 MB/s

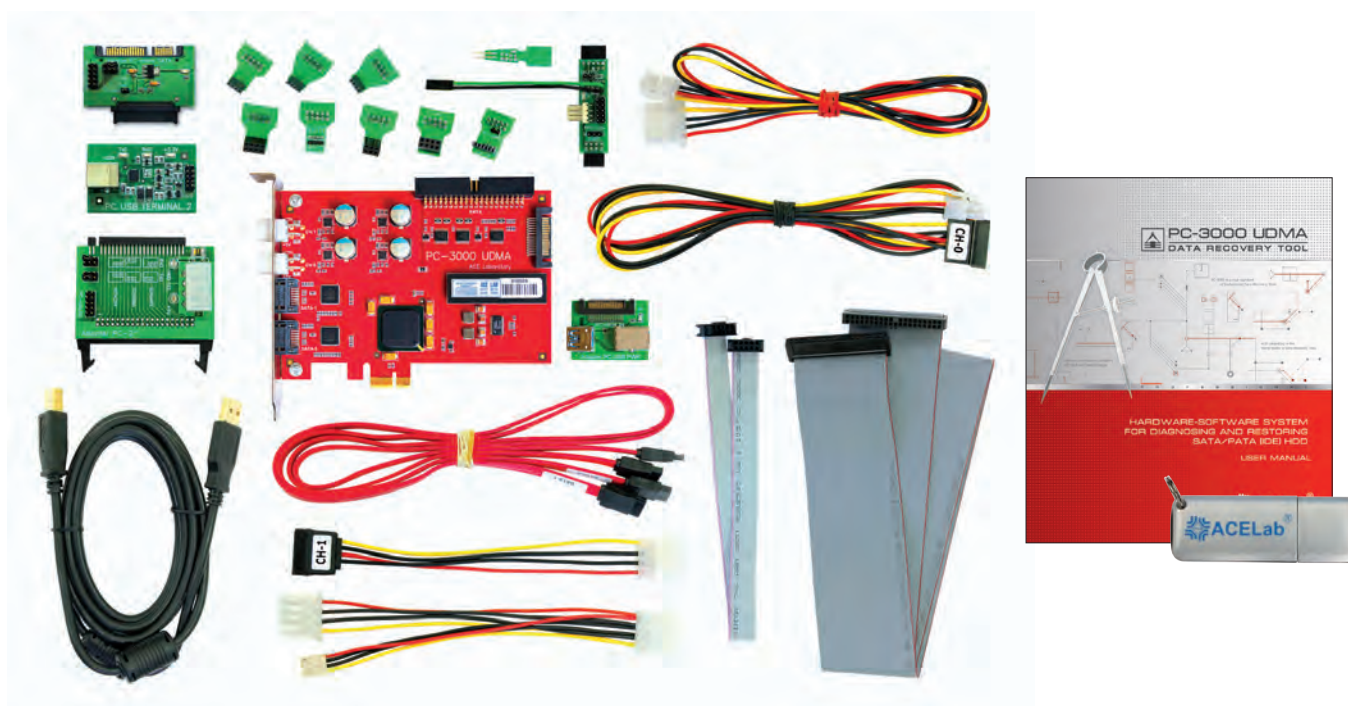
SATA0 is the primary port, SATA1 is switchable with the PATA port (PATA0).

2 HDDs

can be connected to the PC-3000 UDMA at the same time. Thus, you can restore either 2 SATA drives or 1 SATA and 1 PATA drives simultaneously.

The PC-3000 UDMA is a hardware-software solution intended for diagnosing and repairing damaged SATA/IDE HDDs. For data recovery you need both the PC-3000 UDMA and the Data Extractor UDMA, or the PC-3000 UDMA and the Data Extractor UDMA RAID Edition if you wish to recover data from RAID.

The PC-3000 UDMA Kit:



1.	PC-3000 UDMA controller	– 1 pc.	14.	PC-WD 2.5" adapter	– 1 pc.
2.	PC-USB PWR adapter	– 1 pc.	15.	ATCS, ATDA probe unlock	– 1 pc.
3.	PC-USB-TERMINAL adapter	– 1 pc.	16.	USB 2.0 Defender cable	– 1 pc.
4.	PC-2" adapter	– 1 pc.	17.	SATA RAID edition (100 cm) cable	– 2 pc.
5.	SATA-micro SATA adapter	– 1 pc.	18.	UDMA80 (80 cm) flat cable	– 1 pc.
6.	MX-SAFE adapter	– 1 pc.	19.	IDC10 (30 cm) cable	– 1 pc.
7.	PC-FUJ.SATA adapter	– 1 pc.	20.	MX-SAFE power cable	– 1 pc.
8.	PC-QUANTUM adapter	– 1 pc.	21.	SATA HDD (100 cm) power cable	– 1 pc.
9.	PC-SAMSUNG adapter	– 1 pc.	22.	PATA HDD (85 cm) power cable	– 1 pc.
10.	PC-SEAG.SATA adapter	– 1 pc.	23.	PATA-SATA (15 cm) power adapter	– 1 pc.
11.	PC-SEAGATE adapter	– 1 pc.	24.	PC-3000 UDMA software, resource database	– 1 Flash drive
12.	PC-TOSH.SATA adapter	– 1 pc.	25.	User manual	– 1 book
13.	PC-WD 3.5" adapter	– 1 pc.			



PC-3000 SAS System 6 Gbit/s **New!**

The most sophisticated and the fastest system for SAS/SCSI restoration



Maximum possible speed of working with drives, restricted only by the internal speed



What's new in the PC-3000 SAS 6 Gbit/s

- ▶ The possibility to work faster as a result of increase of the drive's reading speed to 6 Gbit/s
- ▶ More efficient diagnostic and analysis of the drives due to the oscilloscope functions of the new Intelligent Power Supply Unit
- ▶ Better compatibility with modern PC power supply units thanks to the new advanced SATA Power connectors

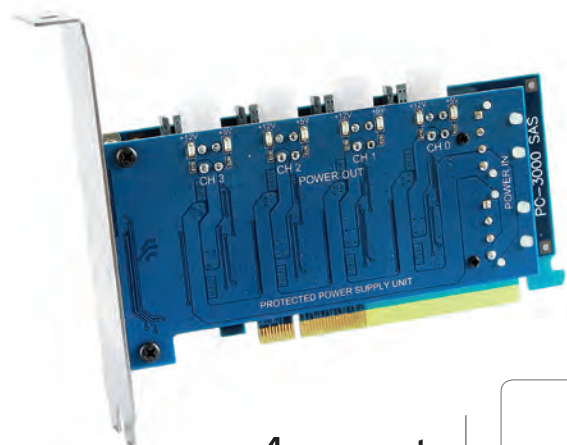
4-port tester-board

4 SAS drives

4 SAS ports with speed up to 600 MB/s

Fast imaging of healthy SCSI/SAS & SATA drives

can be connected to the PC-3000 SAS at the same time.



PC-3000 SAS System 3 Gbit/s

4-port
tester-board

4 SAS drives

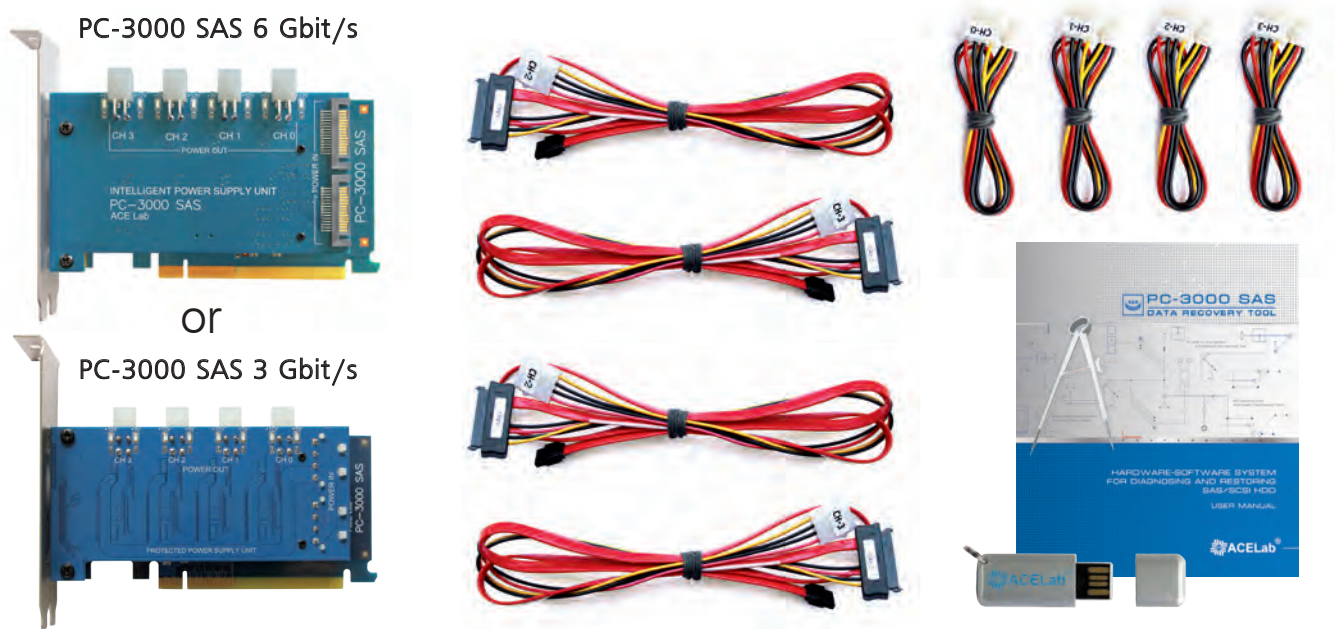
4 SAS
ports
with speed up to
300 MB/s

Fast imaging
of healthy
SCSI/SAS & SATA
drives

can be connected to the PC-3000 SAS at the same time.

The PC-3000 SAS is a hardware-software solution intended for testing and restoring damaged SAS/SCSI HDDs. For data recovery you need both the PC-3000 SAS and the Data Extractor SAS, or the PC-3000 SAS and the Data Extractor SAS RAID Edition if you wish to recover data from RAID.

The PC-3000 SAS Kit:



- | | |
|--|-----------------|
| 1. PC-3000 SAS 6 Gbit/s or PC-3000 SAS 3 Gbit/s controller | - 1 pc. |
| 2. SAS SFF-8482/SATA/Molex (100cm) cable | - 4 pcs. |
| 3. HDD SCSI (50 cm) power cable | - 4 pcs. |
| 4. PC-3000 SAS software | - 1 Flash drive |
| 5. User manual | - 1 book |

Data Extractor

Data recovery professionals' best choice

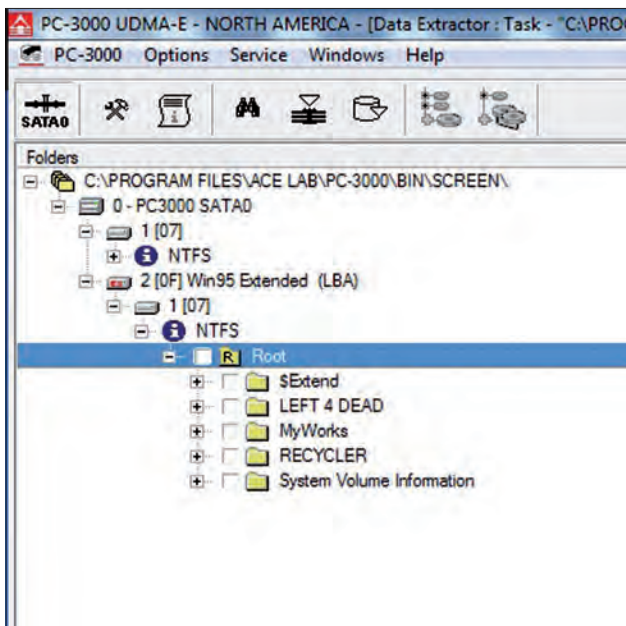
The Data Extractor is a professional software product functioning in tandem with the PC-3000 hardware-software products. It is intended for recovering data from **SATA (Serial ATA), ATA (IDE) HDDs 3.5", 2.5", 1.8", 1.0", USB HDD, SSHD (Solid State Hybrid Drive), etc.**

The Data Extractor is the essential part of the following PC-3000 data recovery systems:

- ▶ PC-3000 Express + Data Extractor Express = PC-3000 Express System
- ▶ PC-3000 UDMA + Data Extractor UDMA = PC-3000 UDMA System
- ▶ PC-3000 SAS + Data Extractor SAS = PC-3000 SAS System

When working with a damaged drive, it is very important to read the maximum data volume in the shortest period of time, as a damaged HDD can stop functioning at any time. The Data Extractor has the powerful integrated functionality for logical analysis of file systems, which allows to read only necessary data. This advanced technology greatly reduces the volume of the read data, the workload on damaged HDDs and the time required for data recovery. You can read the data even if a drive has considerable physical damages.

Supported file systems



The Data Extractor supports the most popular file systems **FAT, exFAT, NTFS, EXT2/3/4, HFS+, UFS1/2, BtrFS, ZFS, XFS, ReiserFS, VMFS, WFS0.x (Digital Video Recorder)**. It is possible to build the used/unused sectors map, the file system metadata map, the map of selected files and folders. The specialized modes, such as **Partition Data Analysis**, enable to recover data from the damaged file systems (data deleted by users, virus attacks, deleted metadata, software failures, etc.).

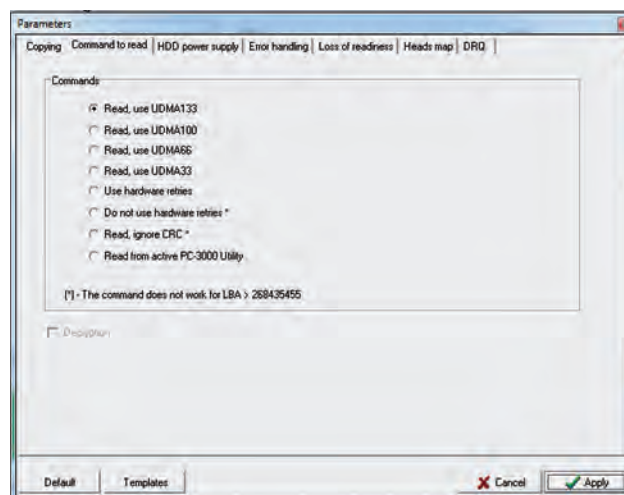
Data recovery from virtual drives (**flat, vmdk, vhd, vhd, dmg**) and encrypted partitions (**FileVault, BitLocker, TrueCrypt**) are supported.



Working with damaged drives

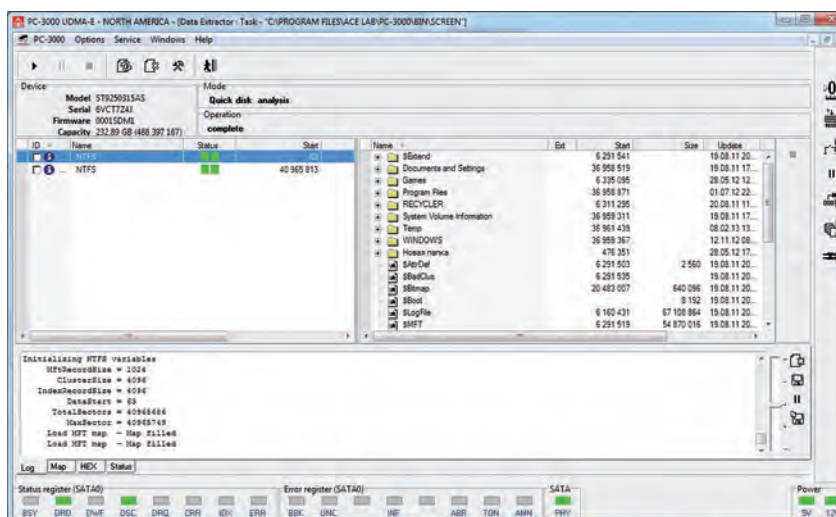
The PC-3000 hardware-software system allows to create a «shadow» copy of the read data and use this copy for the further work. It minimizes the handling of bad drives. Moreover, the **Data Extractor** has an extended functionality for working with damaged HDD:

- ▶ Reading HDD in technological mode
- ▶ Reading by head map
- ▶ Reading mode selection (UDMA 133/100/66/33, PIO 4/3/2/1/0)
- ▶ Read forward and backward
- ▶ Read ahead (cache function) disabling
- ▶ Autorelocation disabling
- ▶ Reading with hardware and software retries
- ▶ Reading with ignoring ECC
- ▶ Power supply control
- ▶ Software and hardware resets
- ▶ Virtual translator mode for recovering data from HDDs with corrupted dynamic translators
- ▶ Flexible map operation functionality (separate map building for heads)



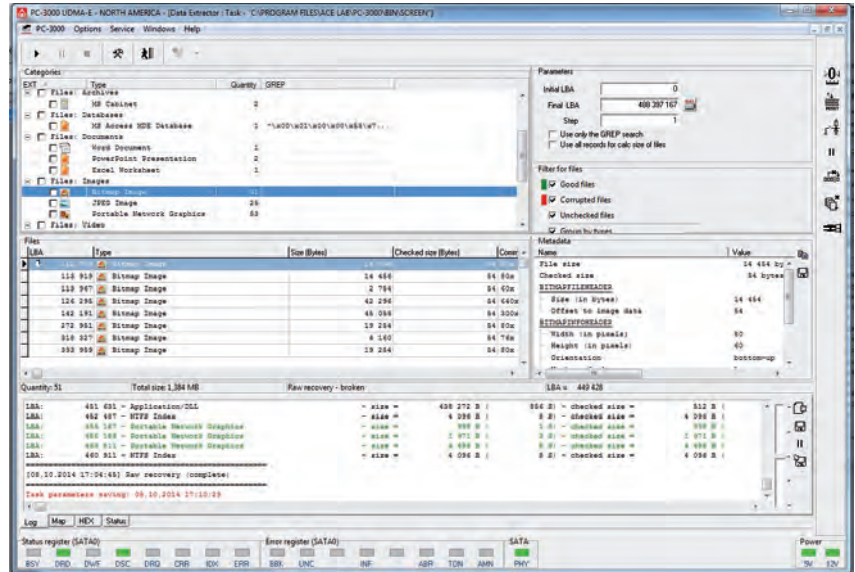
Quick Disk Analysis mode

This mode allows to find the partitions which are not available anymore because the disk structure is lost: **MBR, GPT, Apple partition table**, etc. It enables to estimate the partition integrity and view a file/folder tree.



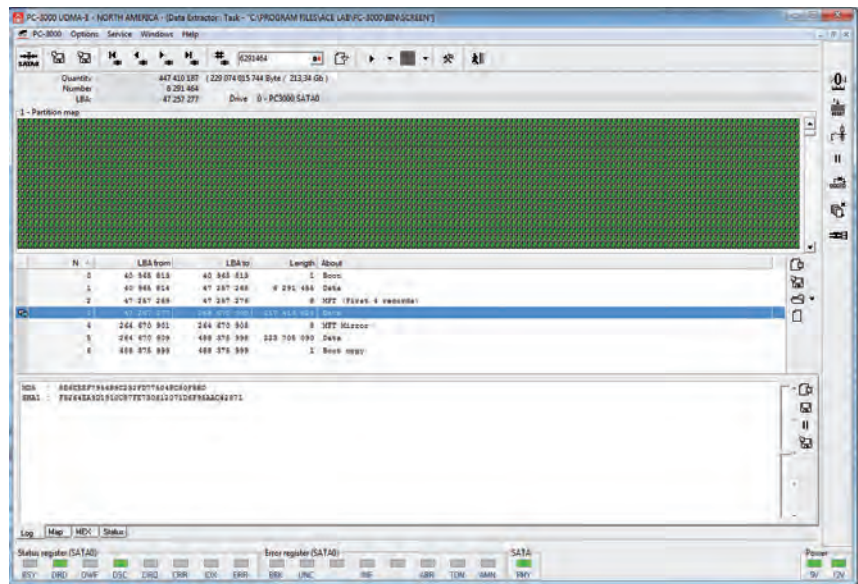
Advanced RAW Recovery mode

The mode allows to recover the most part of user data even if the file system is catastrophically damaged. The **RAW Recovery** mode searches and analyses the integrity of files irrespective of the file system structure. It supports a broad range of user data (images, audio/video files, archives, etc.) and file system metadata. The regular expression mechanism allows to add your personal search settings.



Forensic features

- ▶ **Storage Device Decryption:** It is possible to decrypt software encrypted partitions (Microsoft BitLocker, Apple FileVault, TrueCrypt) and hardware encrypted Western Digital drives (including Self-encrypting drives).
- ▶ ***.E01;*.aff;*.s01;*.001** extensions are supported for drive images and partitions. Data export possibility into ***.E01;*.aff;*.s01;*.001** file extensions
- ▶ **Data structures viewing and navigation mode.** The supplied database of structures includes different filesystem and file metadata



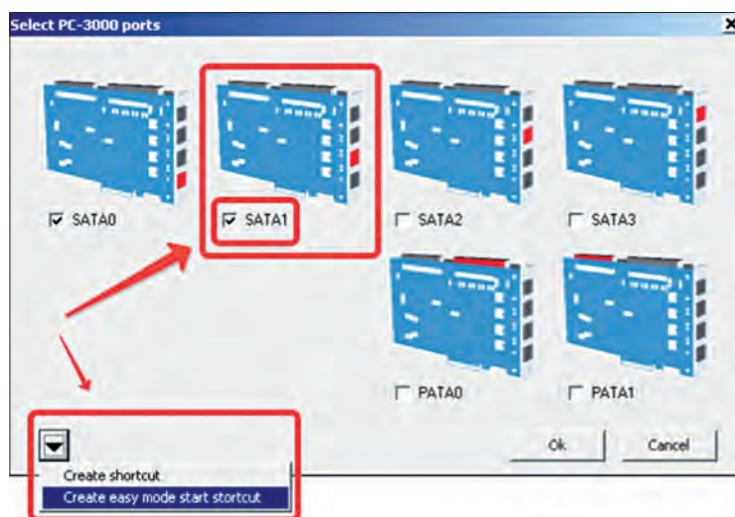
- ▶ **Analysis of data maps through the RAW recovery mode and GREG search** in order to get digital evidence. The mode allows to recover most of user data even if the file system is critically damaged. The RAW recovery mode allows to search and analyze the integrity of files irrespective of the file system structure. It supports a broad range of user data (images, audio/video files, archives, etc.) and file system metadata. The regular expression mechanism allows to add your personal search settings.
- ▶ **Map building possibility for files, folders, partitions, used/unused space, file system metadata, etc.**

PC-3000 Easy Mode

PC-3000 Easy Mode makes the job much easier and better organized for:

- ▶ Digital forensic experts
- ▶ Computer repair technicians
- ▶ Data recovery learners

The new easy mode interface is a dashboard with quick-launch buttons allowing users to perform a lot of routine, but necessary steps automatically.



Main Operations in Easy Mode

- ▶ Managing drive power
- ▶ Reading and analyzing drive identification data
- ▶ Reading and analyzing drive S.M.A.R.T. data
- ▶ Performing quick drive test to check the drive's condition
- ▶ Performing complex test for comprehensive examination
- ▶ Removing password if a drive is security-locked
- ▶ Viewing Data (a DE task without copy creation)
- ▶ Creating Data copy (a DE task with copy creation)
- ▶ Working with previously created tasks

Advantages for Digital Forensics

Simplified PC-3000 interface is essential for forensic experts when looking for evidence from damaged storage devices. They can easily:

- ▶ Analyse logically damaged drive
- ▶ View data (files and file structures)
- ▶ Unlock Password
- ▶ Create disk images
- ▶ View S.M.A.R.T. information
- ▶ Recover data using the Data Extractor software

In the future the PC-3000 easy mode is expected to be enhanced with ready-made solutions for typical problems in specific drive families and models (selected automatically based on diagnostics results) and creation of copies with hash calculation in E01, aff, and raw formats (similarly to manual DE tasks now).

Data Extractor RAID Edition

The easiest, fastest and smartest tool to recover data from RAID

Data Extractor RAID Edition is the professional software product for recovering data from RAID arrays. Functioning in tandem with the PC-3000 controllers, it forms the truly unique PC-3000 RAID System (it can be of various types Express/UDMA/SAS). The hardware-software combination enables to solve the most complicated RAID cases when one or several drives have not only logical (deleted partitions, virus attacks, etc.) but also serious physical damages.



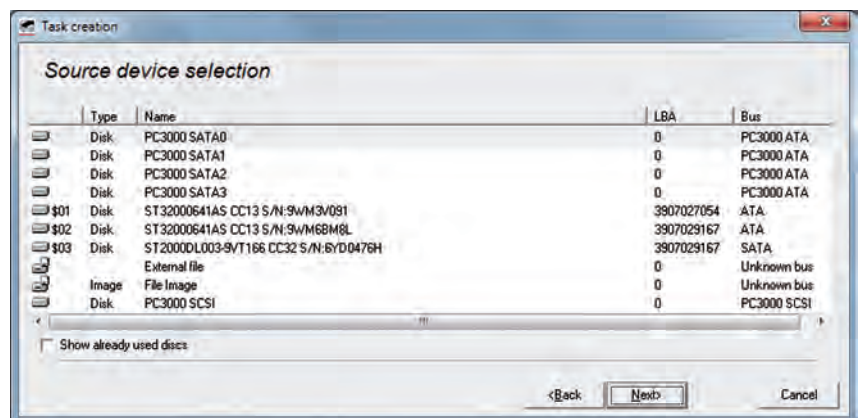
Supported virtual RAID levels

- ▶ 0 (Stripe), 1 (Mirror), 1E Offset and Adjacent, JBOD, 4, 5, 5E, 5EE, 6 and 6-Adaptec
- ▶ Various combined levels: 10, 50, 51, 60 and others (due to the possibility to use virtual RAID array as a member)
- ▶ Special file systems and logical volume managers: ZFS (RAID-Z), Btrfs, WSS.
- ▶ Custom configurations that are set by user with the tabular (matrix) presentation

0	1	XOR	2	3	XOR
5	XOR	4	7	XOR	6
XOR	8	9	XOR	10	11

Virtual RAID members

- ▶ Drives connected to the PC-3000 ports
- ▶ Storage devices connected in a standard way
- ▶ Image files
- ▶ Data Extractor tasks created previously with copies to files
- ▶ Previously created virtual RAIDs





Working with built RAID array

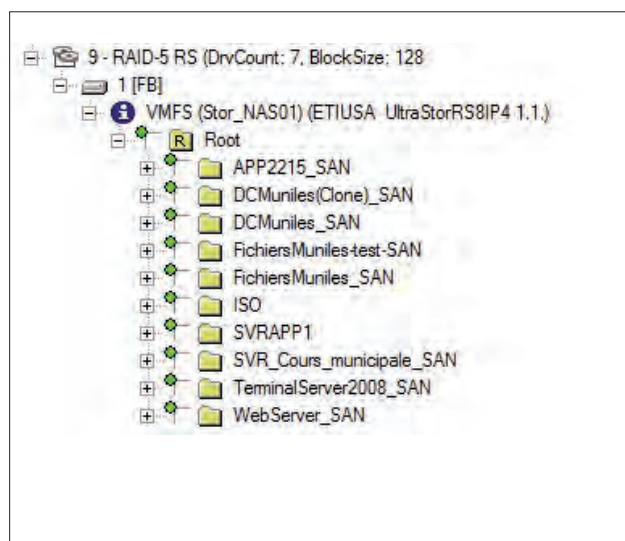
Features:

Ability to work with a virtual RAID array on-the-fly (as with a conventional drive without need for imaging of virtual RAID):

- ▶ Reviewing all supported file systems
- ▶ Various logical recovery modes
- ▶ Mounting of virtual RAID to Operating System

Specialized features:

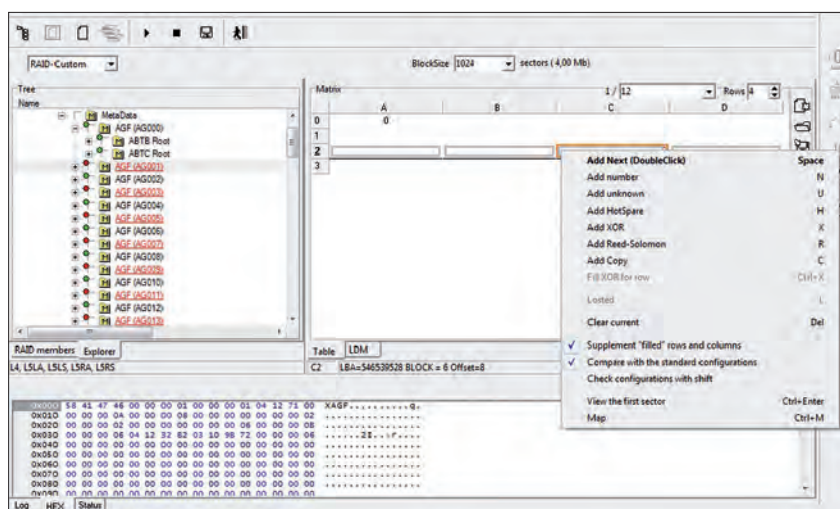
- ▶ Recovering data from redundant RAID arrays (block copies, XOR, Reed-Solomon)
- ▶ Checking the integrity of data for RAID arrays with redundancy
- ▶ Building various «Sub-maps» for specific RAID members



Determining the array configuration

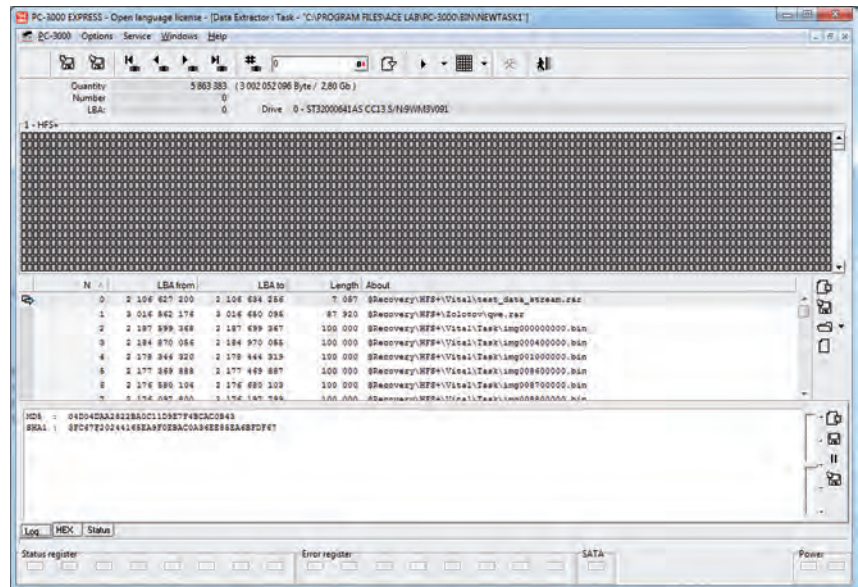
Specialized features make it easier to determine the RAID configuration:

- ▶ Auto-detection mode based on the analysis of RAID metadata (mdamd, LDM, etc.)
- ▶ Unique auto-detection mode based on the analysis of file systems and user data
- ▶ Powerful interactive mode helping to easily determine even the unusual configurations
- ▶ RAID member statistics is effective and robust way that allows to determine RAID parameters
- ▶ Flexible automatic operations enabling the user to control the process
- ▶ Useful search tools help to define numerous RAID parameters (detecting the size, reviewing the file system structures, metadata with disk structure, analysis of the information from LDM, etc.)
- ▶ The possibility to determine the array parameters without any effect on the damaged HDDs



Working with damaged HDDs in RAIDs

The **Data Extractor RAID Edition** software can work with several damaged HDDs connected to the PC-3000 ports within one task at the same time. The total number of connected HDDs can be increased by using motherboard ports and image files.

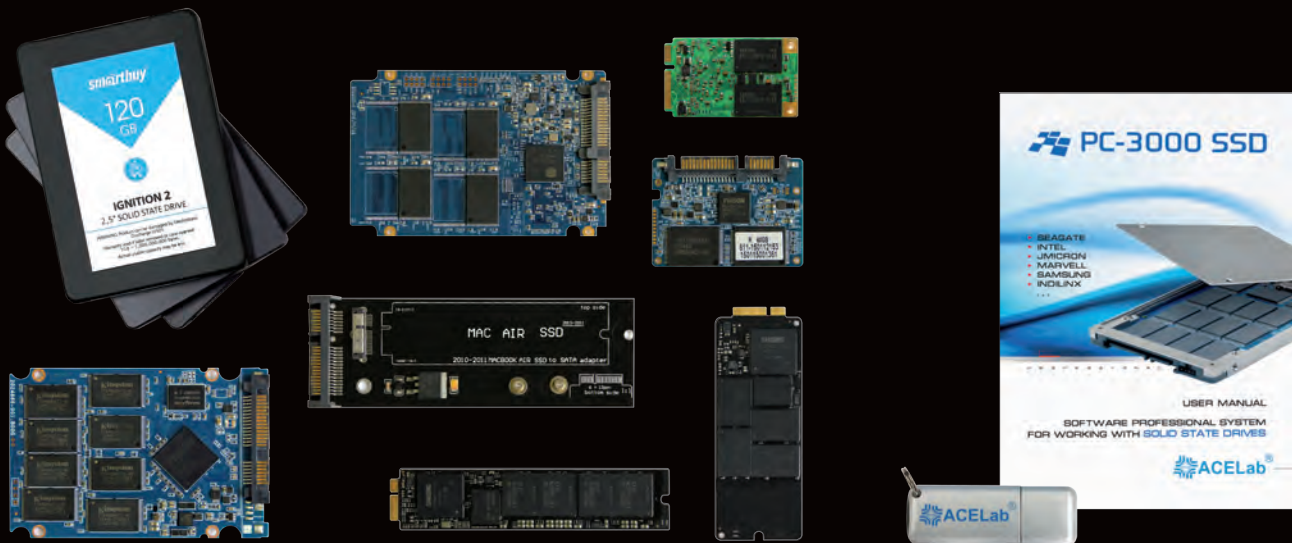


Key features for working with damaged HDDs in RAIDs

- ▶ You can make a full or partial data copy from any HDD included in the RAID
- ▶ It is possible to create and use a virtual translator for any HDD in the RAID or the whole virtual RAID
- ▶ Efficient interaction with the specialized PC-3000 Utilities for HDDs connected to the PC-3000 ports (power supply management, reset commands, choice of reading command, work in technological mode, etc.)
- ▶ Redundancy usage with the purpose of data recovery from the damaged HDDs
- ▶ The possibility to skip a damaged HDD while determining the array configuration or to use the data taken from a copy
- ▶ Integrated logical analysis features that allow to read only the minimally necessary amount of data from the storage device, thus reducing the workload and increasing the chances of successful recovery
- ▶ Advanced features for working with SCSI and SAS storage devices (full control over reading parameters, choice of reading command, building the head map, etc.)

PC-3000 SSD

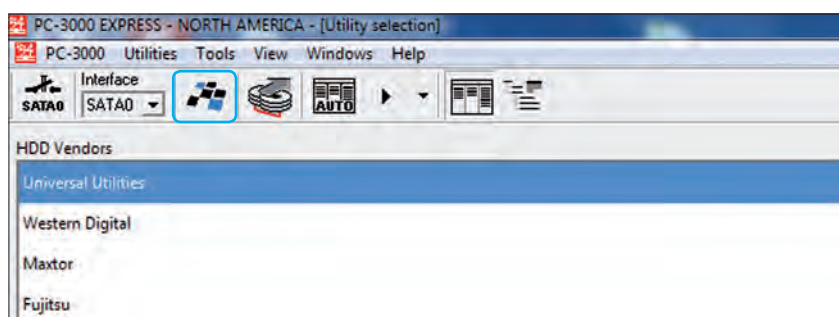
The leading-edge unique solution for recovering SSD in technological mode



The **PC-3000 SSD** is a professional software product which operates in tandem with one of the two up-to-date hardware-software systems – **PC-3000 Express** or **PC-3000 UDMA**. It is intended for restoring SSD and recovering data from damaged SSD. The PC-3000 SSD can operate with SATA-compatible solid state drives based on SATA, microSATA, mSATA, M.2 (NGFF), LIF, ZIF interfaces.

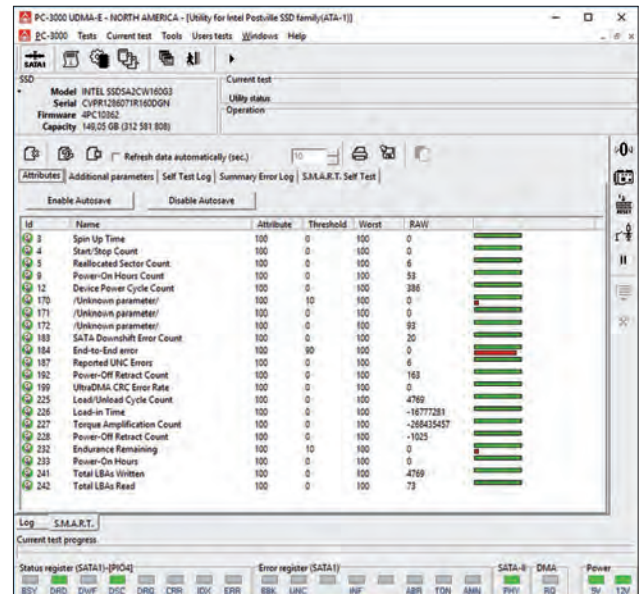
The PC-3000 SSD contains a set of specialized utilities to repair and recover solid-state drives manufactured by various vendors (OCZ, Corsair, Crucial, RunCore, A-DATA, G.Skill, Micron, Plextor, Intel, Samsung, Seagate, SanDisk, Kingston, Smartbuy, Silicon Power, PNY, AMD, etc.). These utilities enable to deeply diagnose SSDs, perform service operations, re-write the drive microcode, get a direct access to memory chips, carry out low-level formatting blocking the damaged cells and placing their addresses into the defect table, as well as perform many other useful operations.

The PC-3000 SSD is launched from the main window of the PC-3000 Express or UDMA Systems by clicking the button on the toolbar.



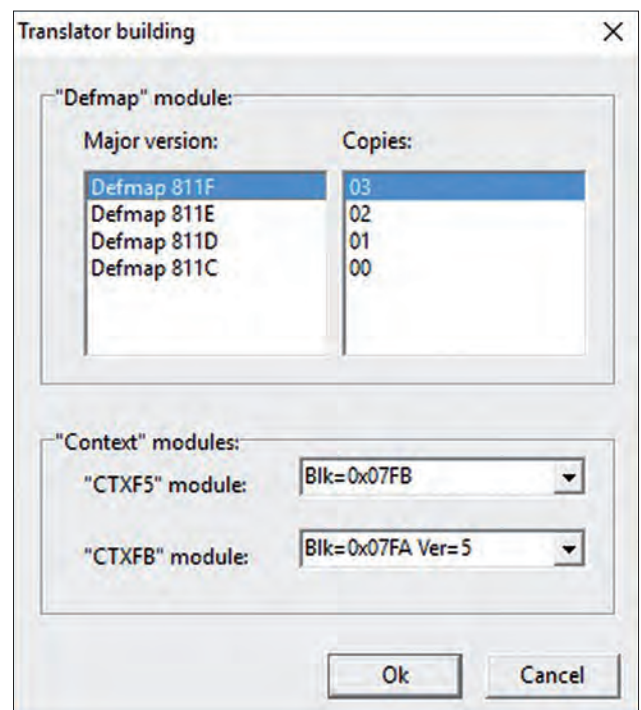
SSD Diagnosis and Repair

- ▶ Diagnose an SSD in technological mode
- ▶ View the logs of hidden defects (P-page, G-page)
- ▶ Perform low-level formatting to hide the discovered defects
- ▶ Reset the logs and S.M.A.R.T. parameters
- ▶ Search for the damaged memory chips



SSD Recovery

- ▶ Provide direct access to the content of memory chips so that you do not need to unsolder the chips
- ▶ Emulate the translator operation in order to get an access to user data
- ▶ Load the microcode into the drives RAM
- ▶ Read and write the content of the SSD ROM
- ▶ Verify and restore the SSD service information
- ▶ View the password and reset the password that was earlier set on the SSD
- ▶ Turn off background processes in the SSD to prevent data damage
- ▶ Work with the Data Extractor





PC-3000 Flash (ver.4.0)

State-of-the art solution with the advanced modes for the most successful Flash recovery



The **PC-3000 Flash** professional hardware-software system is well-known as the most efficient, comprehensive and user-friendly solution with the advanced modes for NAND data recovery. It is a highly-demanded product among data recovery engineers as it offers the widest range of features and newest algorithms to recover data with the maximum success rate. PC-3000 Flash will help you with both simple cases using «one-click» solutions and the most complex ones using a large selection of manual modes.

It supports various NAND-based devices such as: **USB Flash drives, SD, microSD, Memory Stick (MS), xD, MMC, CF, Voice Recorder**, etc. even if there is no access by regular means.

The PC-3000 Flash Reader ver.4.0 has a built-in power control adapter that allows to manage power supply for the majority of adapters.

The PC-3000 Flash software is being constantly developed, providing the users with new features to solve more NAND issues than any other tool available on the market.

PC-3000 Flash is more than just a tool:

- ▶ Over 6600 «one-click» solutions in the PC-3000 Flash Global Solution Centre to recover data in 5 minutes
- ▶ The highest data recovery success rates with the Hardware Retries mode to read out damaged memory chips
- ▶ Regularly updated Online Databases (XOR, Dynamic XOR, ECC, Page Format, ReadRetry Tables) to get the latest resources for the present-day flash drives
- ▶ The most universal and affordable technologies and an extensive Monolith Database to recover data from a great variety of monoliths
- ▶ The biggest team of highly qualified Technical Support engineers ready to help with any Flash recovery case
- ▶ A separate section at forum.ancelaboratory.com dedicated to NAND data recovery technologies

The PC-3000 Flash Kit and adapters:



1. PC-3000 Flash Reader (ver.4.0)	– 1 pc.	5. Circuit Board adapter	– 1 pc.
2. TSOP-48 adapter	– 1 pc.	6. USB 2.0 Defender Cable	– 1 pc.
3. LGA/TLGA-52/60 (14x18) adapter	– 1 pc.	7. PC-3000 Flash software	– 1 Flash drive
4. BGA-152/132 adapter	– 1 pc.	8. User manual	– 1 book

Adapters sets – combo offers to save time and money

Monolith Set



1. Multiboard Adapter	– 1 pc.
2. Monolith Module	– 2 pc.
3. LGA-52/TSOP-48 Module	– 1 pc.
4. BGA-152/VBGA-100 Module	– 1 pc.
5. Card Adapter	– 1 pc.

Extended Set



1. TSSOP-56 Adapter	– 1 pc.
2. VBGA-100 Adapter	– 1 pc.
3. LGA/TLGA-52/60 (12x17) Adapter	– 1 pc.

LGA/TLGA-52/60 (12x17) adapter

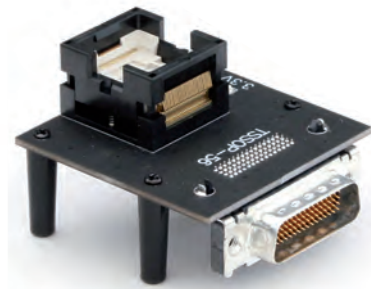
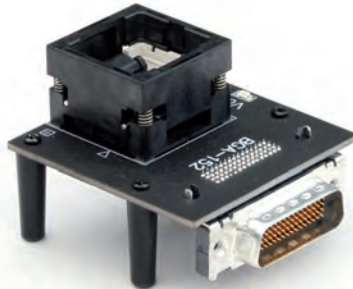
LGA/TLGA-52/60 (14x18) adapter



TSOP-48 adapter

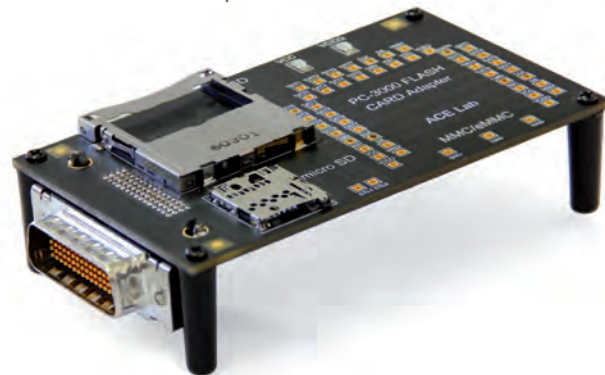
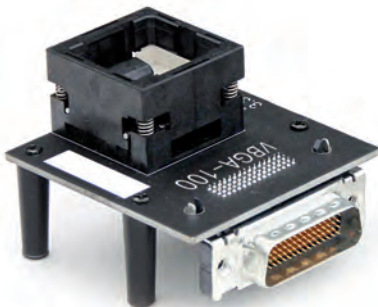
BGA-152/132 adapter

TSSOP-56 adapter



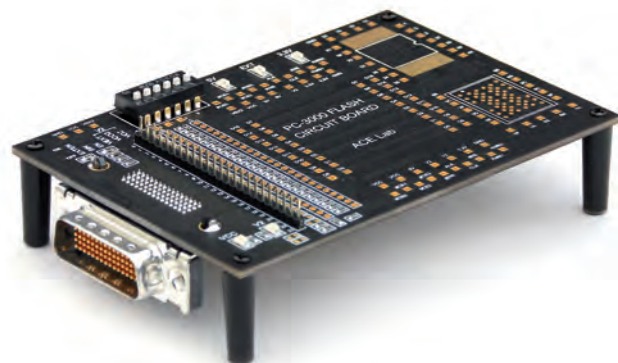
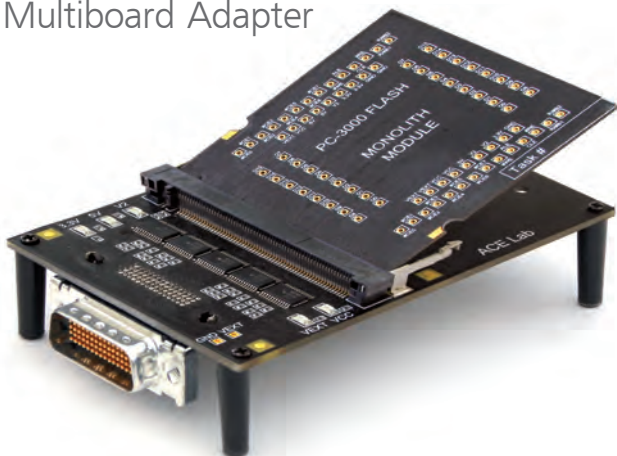
VBGA-100 adapter

Card Adapter



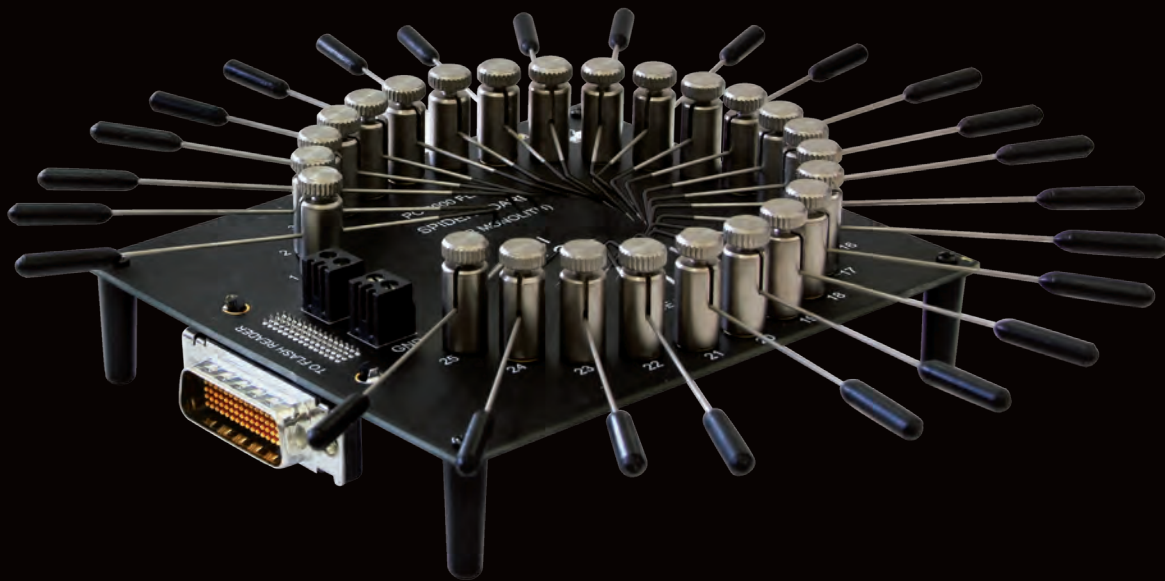
Multiboard Adapter

Circuit Board Adapter



Spider Board Adapter

Change-maker in monolith recovery. Minimal Soldering & minimal risk.



PC-3000 Flash Spider Board Adapter is a universal solution for safe monolith recovery without tedious soldering! Using it you don't need specific adapters to each monolith you deal with.

It is designed for connection to internal contacts of NAND-based Flash drives manufactured as single-package chips (monoliths). The adapter consists of 25 universal contacts that support software configuration of their association with NAND interface signals in a corresponding task.

The main features of the Spider Board Adapter

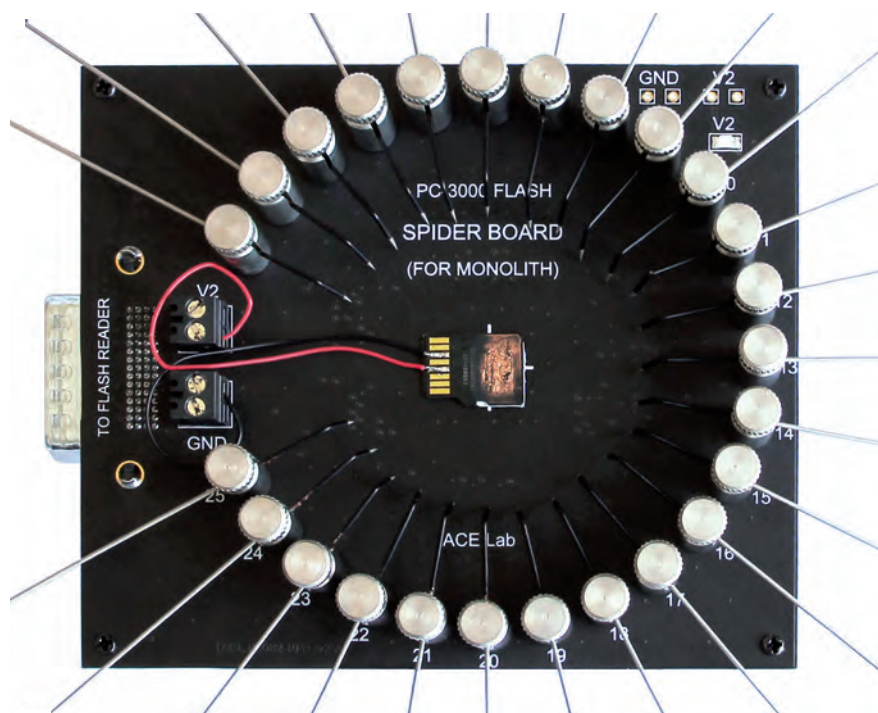
- ▶ Universal solution that doesn't require soldering to the technological pinouts. It saves time, reduces the risks and makes monolith recovery process much easier
- ▶ 25 specialized needles that help you connecting to pinouts, no matter how they are located
- ▶ GND and VCC pins are fixed by screw connectors for convenient usage
- ▶ The adapter is developed specifically for using with microscope

With the Spider Board Adapter it is possible to



- ▶ Fine-tune the connectors on the software level
- ▶ Save the previous pinout settings in a file to use on similar cases
- ▶ Constant 5V or controlled by VCC (1.8 V-3.6 V) power supplies
- ▶ Control the adapter power supply via software
- ▶ Recover data from partially damaged SD and MicroSD cards as a fully functional Card Adapter

NAND-based devices supported: **MicroSD, SecureDigital, UFD, MemoryStick.**



Minimal soldering is required to power up the monolith.
Pinout connection is performed via 25 needles.

Professional Technical Support



Highly qualified engineers to help you with any data recovery cases

Taking your first steps in data recovery?
Stuck with an especially difficult case?
Want to stay ahead of the competitors?

Multiply your efficiency with the biggest team of technical support engineers!

- ▶ Professional consulting by ACE Lab engineers via the CRM Ticket System
- ▶ Live Chat communication to help you in urgent cases
- ▶ TeamViewer assistance with the most complex issues
- ▶ Regular software updates containing new unique features that no other tools have
- ▶ Access to the Knowledge Base

Support Time
Frame
14 hours

FREE helpful online resources

- ▶ ACE Lab Blog with much-needed video tutorials and interesting articles: blog.ancelaboratory.com
- ▶ ACE Lab Forum, where you can share your knowledge and opinions with experienced PC-3000 users and with ACE Lab engineers: forum.ancelaboratory.com
- ▶ ACE Lab YouTube channel with useful video tutorials: www.youtube.com/user/PC3000datarecovery

More information at www.ancelab.eu.com & ts.ancelaboratory.com

Professional Data Recovery Training



A rapid way to data recovery mastership

Recover more data with the PC-3000 Data Recovery Training:

- ▶ The most thorough and precise data recovery training – just a few days can substitute for several months of persistent self-learning
- ▶ The only training with the widest range of real case studies that you won't find anywhere else
- ▶ A great chance to understand the core of data recovery process, get the valuable techniques and become able to handle a lot of cases you couldn't handle before
- ▶ Extremely knowledgeable and experienced tutors with individual approach to every student
- ▶ The biggest vendor-provided hi-tech training classroom with fully equipped workplaces for data recovery specialists
- ▶ Possibility to attend the training in Europe, North America, Asia or at your facility
- ▶ Official certificates upon completion of the courses
- ▶ Bundle offers and bonuses for getting the training, products and service at once

Storage Type	Training Type	Level	Duration
HDD Data Recovery	PC-3000 HDD Data Recovery Expert Training	Basic	4 days
	PC-3000 HDD Data Recovery Advanced Training	Advanced	2 days
Flash Data Recovery	PC-3000 Flash Data Recovery Expert Training	Basic	4 days
	PC-3000 Flash Data Recovery Advanced Training	Advanced	2 days
SSD Data Recovery	PC-3000 SSD Data Recovery Expert Training	Basic	1 day
RAID Data Recovery	PC-3000 RAID Data Recovery Advanced Training	Advanced	4 days
Monolith Data Recovery	PC-3000 Monolith Data Recovery Expert Training	Basic	1 day

Professional Conferences

Latest technological know-how at first hand

You are always welcome to our Conferences and Meetups!

- ▶ The latest and advanced techniques shared directly by the ACE Lab developers and top engineers
- ▶ Numerous tips and tricks and even ready-to-use solutions
- ▶ Asking questions directly to the ACE Lab top engineers
- ▶ Networking with data recovery peers
- ▶ Sharing experience in the data recovery community

If you are interested in being the first to learn the latest developments in data recovery and staying on the cutting edge of technologies, check the date of our next event in the News section on our website.



ACE Lab Team

Bright minds creating technologies for you



Our team on the 25th of April 2017
25th Anniversary of ACE Lab group

The ACE Lab company has an experienced team of more than 80 smart, driven people who care a lot about perfecting everything we do. Technological prowess, innovative non-standard thinking, and hard work help us to reach our main aim – provide our valued customers with the best professional solutions.

And for the last 26 years we have proved we can really do it.

ACE Lab Certificates

As a market leader, we want more than high-quality products. We continually review and improve our Quality Management and Information Security Systems which comply with the ISO 9001:2015 and ISO/IEC 27001:2013 to ensure that we not only meet but exceed our customers' expectations.



EKO-KOM Certificate for PC-3000



ISO 9001:2015 certification (English)



ISO/IEC 27001:2013 certification (English)



Electrical Safety Certificate for PC-3000 Express, UDMA, UDMA-E, Portable, SAS



ISO 9001:2015 certification (Czech)



ISO/IEC 27001:2013 certification (Czech)



Electrical Safety Certificate for PC-3000 Flash

Contact Us

Manufacturing:

Postal address:

ACE Lab Europe s.r.o.
680/10b Krizikova
Karlín, Prague 8
the Czech Republic, 186 00

Phone:

▶ +420 222 361 605

E-mail:

info@acelab.eu.com

Website:

www.acelab.eu.com

Support:

Support time frame:

For Europe, Asia, Africa and Australia
08:00 - 17:00 GMT +01:00
For North and South Americas
14:00 - 22:00 GMT +01:00

Phone:

▶ +7 863 2015 007

▶ +7 863 2015 008

E-mail:

info@acelaboratory.com

Website:

www.acelaboratory.com

Technical Support:

ts.acelaboratory.com

Blog:

blog.acelaboratory.com

Forum:

forum.acelaboratory.com

